

**PLEASE CHECK WWW.MOLEX.COM FOR LATEST PART INFORMATION**

**Part Number:** [0357990390](#)  
**Status:** **Active**  
**Description:** 1.78mm (.070") Tab Wire-to-Board Housing, Female, 3 Circuits

**Documents:**

[Drawing \(PDF\)](#) [RoHS Certificate of Compliance \(PDF\)](#)  
[Product Specification PS-35798-001 \(PDF\)](#)

**General**

Product Family Crimp Housings  
 Series [35799](#)  
 Product Name N/A

**Physical**

Circuits (maximum) 3  
 Gender Female  
 Glow-Wire Compliant No  
 Number of Rows 1  
 Packaging Type Bag  
 Panel Mount No  
 Pitch - Mating Interface (in) 0.236 In  
 Pitch - Mating Interface (mm) 6.00 mm  
 Stackable No  
 Temperature Range - Operating -40°C to +120°C

**Material Info**

**Reference - Drawing Numbers**

Product Specification PS-35798-001  
 Sales Drawing SD-35799-001

**EU RoHS**

**ELV and RoHS  
Compliant**

**REACH SVHC**

Not Reviewed

**Halogen-Free**

**Status**

**Not Reviewed**

**China RoHS**



**Need more information on product  
environmental compliance?**

Email [productcompliance@molex.com](mailto:productcompliance@molex.com)  
 For a multiple part number RoHS Certificate of  
 Compliance, [click here](#)

Please visit the [Contact Us](#) section for any  
 non-product compliance questions.

**Search Parts in this Series**

[35799Series](#)

**Mates With**

[35798](#)

**Use With**

[57963](#)

DO NOT SCALE DRAWING  
DIMENSION IN METRIC

B

C

PROJECT NO.

SIMILAR ITEM

DWG. NO.

SD-35799-001

8

7

6

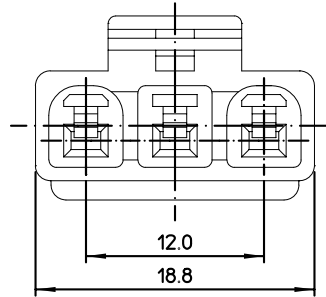
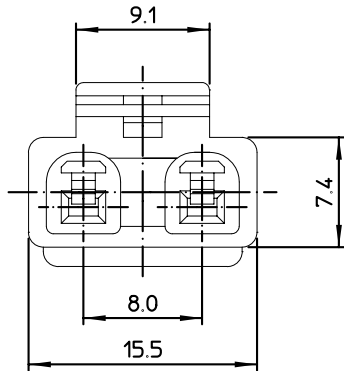
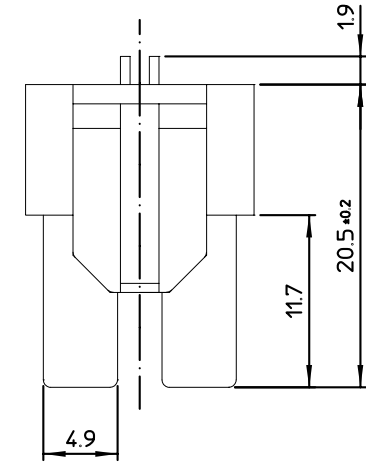
5

4

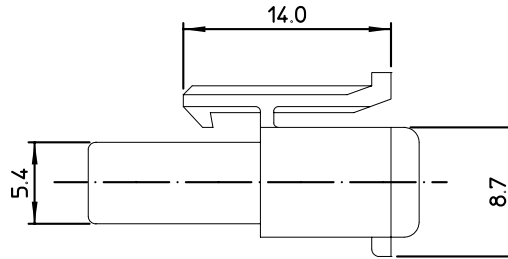
3

2

1



35799-03\*\*



CKT	MATERIAL NO.	ENG NO.	MATERIAL	COLOR
2	357990210	35799-0210	NYLON66 (UL94V-2)	NATURAL
	357990290	35799-0290	POLYPROPYLENE (UL94V-0)	
	357990212	35799-0212	NYLON66 (UL94V-2)	RED
	357990292	35799-0292	POLYPROPYLENE (UL94V-0)	
3	357990310	35799-0310	NYLON66 (UL94V-2)	NATURAL
	357990390	35799-0390	POLYPROPYLENE (UL94V-0)	
	357990312	35799-0312	NYLON66 (UL94V-2)	RED
	357990392	35799-0392	POLYPROPYLENE (UL94V-0)	

F

E

D

C

B

A

8

7

6

5

4

3

2

KOREA

MX-A3

REVISED ECN NO:KOR2002-0014 DRW:CB.CHIN 01/09/14 CH:K.B.K.CHOI APPR:W.LEE	QUALITY SYMBOLS MAJOR -0 CRITICAL C -0	GENERAL TOLERANCES: (UNLESS SPECIFIED)		SCALE 4:1	DESIGN UNITS <input checked="" type="checkbox"/> mm <input type="checkbox"/> INCH	DIMENSIONS: <input type="checkbox"/> mm <input type="checkbox"/> INCH <input checked="" type="checkbox"/> mm ONLY	SHT REV
		4 PLACES ±0.    ±.	DRAWN BY & DATE C.B.CHIN 01/04/17	TITLE: .070 W/B HOUSING-2,3P			
		3 PLACES ±0.    ±.	CHECKED BY & DATE B.K.CHOI 01/04/17	MOLEX INCORPORATED			
		2 PLACES ±0.15    ±.	APPROVED BY & DATE C.W.LEE 01/04/17	CAD FILENAME S35799A.MI	MATERIAL NO. SEE CHART	DRAWING NO. SD-35799-001	SHEET NO. 1 OF 1
1 PLACE ±0.15    ±.	ANGULAR: ±    °	DRAFT WHERE APPLICABLE MUST REMAIN WITHIN DIMENSIONS					
A1	REV	THIS DRAWING CONTAINS INFORMATION THAT IS PROPRIETARY TO MOLEX INCORPORATED AND SHOULD NOT BE USED WITHOUT WRITTEN PERMISSION.					

B